

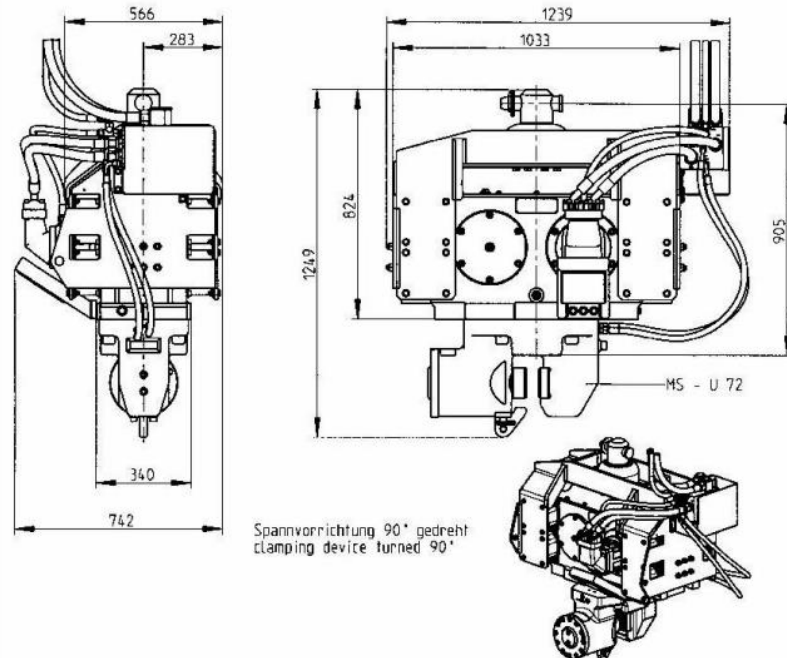
Vibro Hammer Müller MS-7 HFB

Plant Information



GROUND BELOW

Müller MS-7 HFB Technical Data



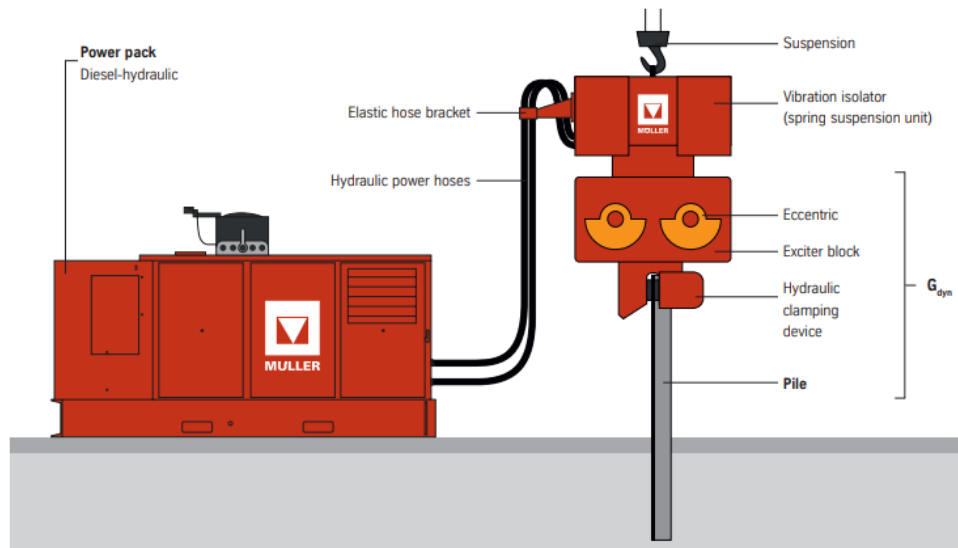
Type			MS-7 HFB
Centrifugal force	F (max.)	kN	604
Eccentric moment	M stat (max.)	kgm	7.0
Frequency	f (max.)	Hz	46.7
Speed	n (max.)	rpm	2800
Pulling force	F pull (max.)	kN	150
Push down	F push (max.)	kN	80
Power consumption	P (max.)	kW	130
Total weight (incl. clamping device)		kg	1300
Dyn. weight (incl. clamping device)		kg	950
Amplitude		mm	14.7
Displacement	Q Motor (max.)	l/min	224
Length	L	mm	1239
Width	B	mm	742
Height (incl. clamping device)	H	mm	1249
Width at throat	T	mm	340
Standard clamping device	Type	MS-U	72
Recommended power pack	Type	MS-A	170

The maximum operating pressure for all excavator-mounted vibrators is 350 bar.

GROUND BELOW

Operating Principles of Müller Vibro Hammers

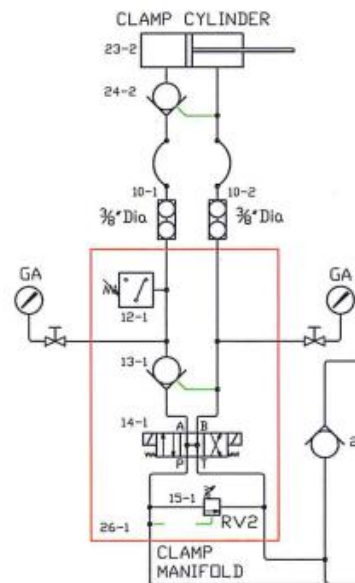
Operating principle of Müller vibrators (typical design)



GROUND BELOW

FOUNDATION ASSOCIATES ENGINEERING PTE LTD
 5 Tuas Avenue 1, Singapore 639490
 Tel : (65)68631633 Fax : (65) 68631455

HYDRAULIC CIRCUITRY



HYDRAULIC SCHEMATIC

